



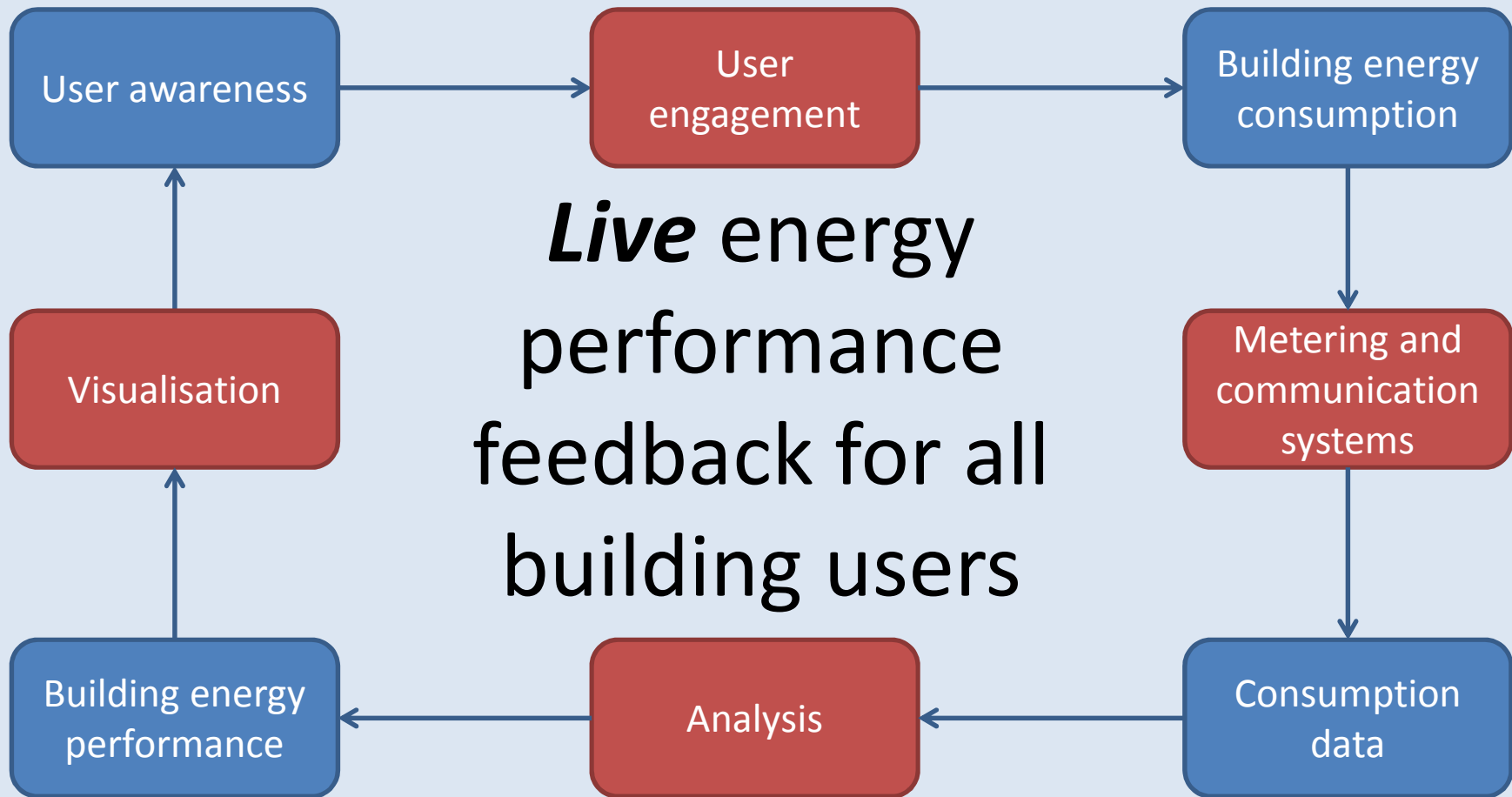
# **A persuasive case for ex ante evaluation of energy savings campaigns?**

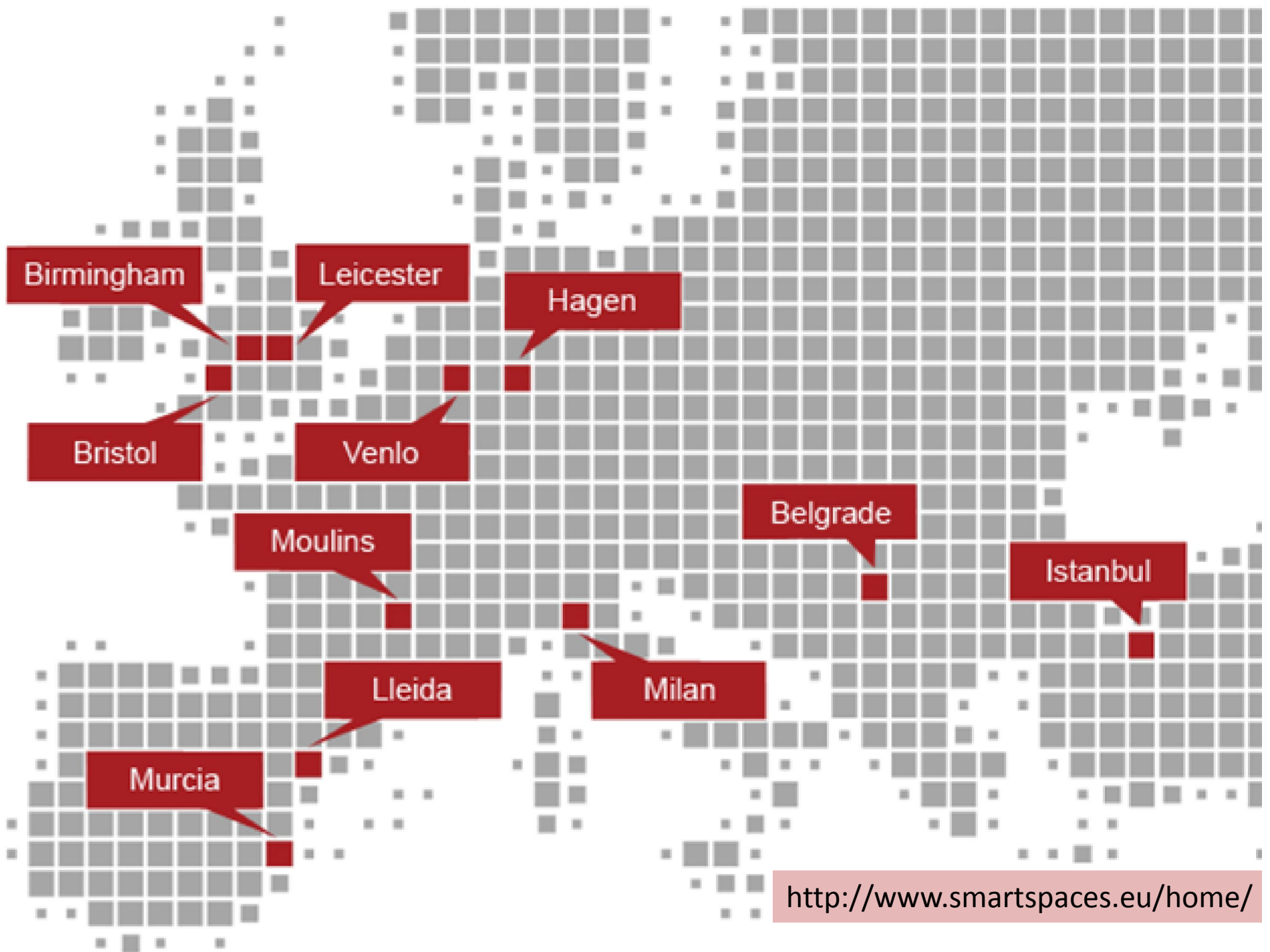
Dr Caroline Wilson, Coventry University Research Solutions, Coventry  
University, Coventry CV1 5BH, UK

Dr Graeme Stuart, Institute of Energy and Sustainable Development, De  
Montfort University, Leicester LE1 9BH, UK

International Energy Program & Policy Evaluation Conference, Berlin, Germany.  
9-11 September, 2014.

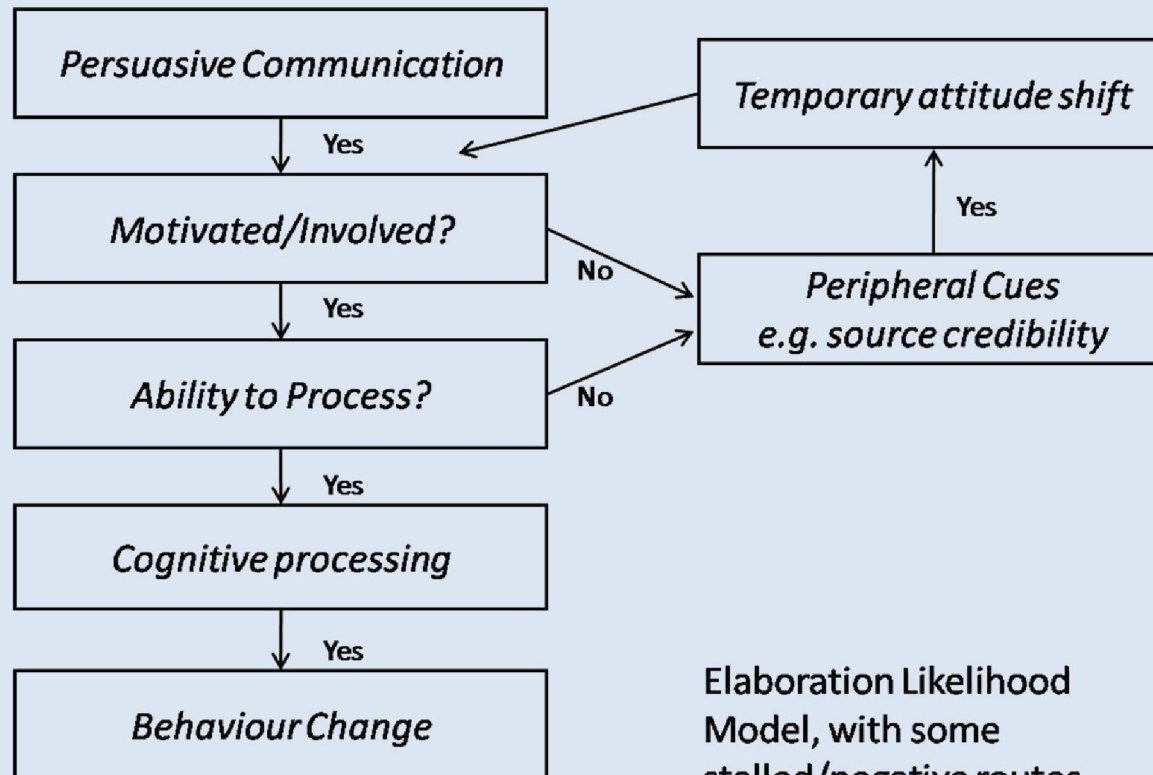
# The vision





<http://www.smartspaces.eu/home/>

# Theoretical context



Elaboration Likelihood Model, with some stalled/negative routes removed for clarity, based on Petty, Brinol and Priester (2009).



# Participants & materials

|          | Age   |       |       | Gender |        | Total |
|----------|-------|-------|-------|--------|--------|-------|
|          | 15-29 | 30-44 | 45-59 | Male   | Female |       |
| Students | 20    | 0     | 0     | 11     | 9      | 20    |
| Staff    | 1     | 3     | 5     | 7      | 2      | 9     |
| Total    | 20    | 3     | 5     | 18     | 11     | 29    |

# Questionnaire snippet

| Variable Name      | Question type  | Stem for question                           | Evaluation/action   | No. |
|--------------------|--|---|---|-----|
| Ability to process | Likert, anchored strongly disagree (5)/ strongly agree (1) | Overall, the project looks as if it will be | inefficient; helpful; useful; enjoyable; engaging; interesting; challenging; involving. | 8   |
| Argument quality   | Likert, anchored strongly disagree/ strongly agree         | Do you find the information                 | believable; clear; credible; convincing; memorable                                      | 5   |



**DE MONTFORT  
UNIVERSITY**  
LEICESTER



**Green Impact**





# Quantitative results

| Variable           | Intention to report | N  | Mean  | U       | Sig.        |
|--------------------|---------------------|----|-------|---------|-------------|
| Ability to Process | yes                 | 13 | 10.19 | 114.500 | <b>.046</b> |
|                    | no                  | 12 | 16.04 |         |             |
| Involvement        | yes                 | 13 | 10.73 | 94.500  | .186        |
|                    | no                  | 11 | 14.59 |         |             |
| Argument quality   | yes                 | 13 | 10.08 | 116.000 | <b>.040</b> |
|                    | no                  | 12 | 16.17 |         |             |
| Source credibility | yes                 | 13 | 12.12 | 76.500  | .776        |
|                    | no                  | 11 | 12.95 |         |             |

Performance this week - **Click on a building to see more detail**

| Building                                       | Electricity   | Gas   |
|--|---|---|
| <a href="#"><u>Hugh Aston</u></a>              |    |    |
| <a href="#"><u>Campus Centre</u></a>           |    |    |
| <a href="#"><u>Queens Building</u></a>         |    |    |
| <a href="#"><u>John Whitehead Building</u></a> |   |   |
| <a href="#"><u>Kimberlin Library</u></a>       |  |  |

## Electricity (Whole Building)



## Gas (Whole Building)



This page provides a more detailed breakdown of the energy performance. An icon is provided for each of the last seven days (ending yesterday). If you understand **why** performance was good or bad on a particular day, it can be easier to replicate or avoid it in the future. [Click here](#) for a more detailed look at the data.






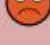


## Energy savings league tables



This week

Downloads

|   |   |   |   |   |
|---|---|---|---|---|
|  | <u><a href="#">Hugh Aston Building</a></u><br>updated 4 hours ago |  Electricity |  Gas |  Water |
|  | <u><a href="#">Campus Centre</a></u><br>updated 5 hours ago       |  Electricity |  Gas |  Water |
|  | <u><a href="#">John Whitehead</a></u><br>updated 4 hours ago      |  Electricity |  Gas |  Water |
|  | <u><a href="#">Kimberlin Library</a></u><br>updated 4 hours ago   |  Electricity |  Gas |  Water |
|  | <u><a href="#">Queens Building</a></u><br>updated 5 hours ago     |  Electricity |  Gas |  Water |

 Tweet 158  Like 18  Share 1

[contact us](#) © Copyright De Montfort University 2012–2014



# Questions?

[caroline.wilson@coventry.ac.uk](mailto:caroline.wilson@coventry.ac.uk) [gstuart@dmu.ac.uk](mailto:gstuart@dmu.ac.uk)

@cjwtweets

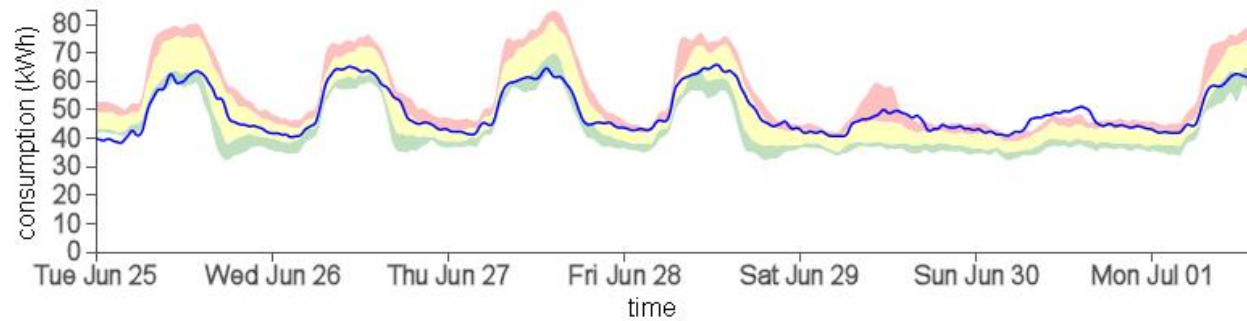
@ggstuart

<http://smartspaces.dmu.ac.uk>

Basic

Detailed

## Electricity (Whole Building)



## Gas (Whole Building)

