



MA BASELINE REPOSITORY

Why Didn't You Tell Me Earlier?

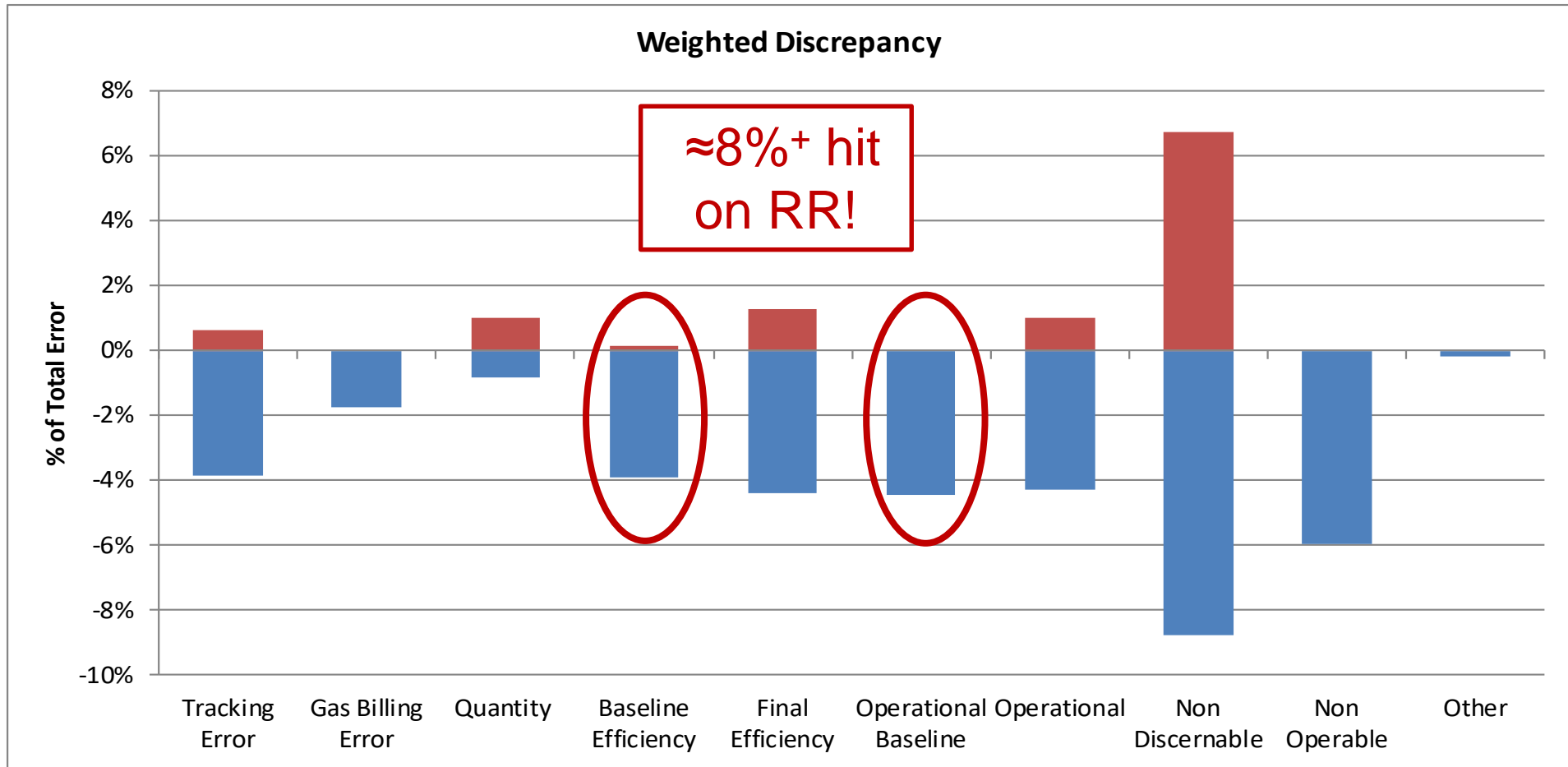
A New Way for Evaluation to Inform Implementation
Before Project Approval

8/20/19

Chris Zimbelman, ERS

SWITCHING THE BASELINE STINKS!

When a baseline is overturned by evaluation, savings can get slashed



It can happen years later and significantly impact RRs

INTRODUCTION AND BACKGROUND

To minimize the dreaded surprise switch...

The image is a composite graphic. On the left, a white brick wall features a vertical energy efficiency scale with labels A4 through G and corresponding colored arrows pointing right. To the right of the scale is a dark, vertical architectural element. Further right is a blue rectangular box containing white text. To the right of the blue box is a photograph of a green filing cabinet with one drawer open, showing stacks of papers. To the right of the filing cabinet is a purple rectangular box containing white text. Below the blue and purple boxes is a teal rectangular box containing white text. The background of the bottom half of the image is a light blue and white data visualization featuring a line graph and a bar chart.

MA developed a baseline framework in 2017

Now implementing a baseline repository

Baseline assumptions must be made on an ex-ante basis in the planning stage and vetted ex-post in the evaluation stage

GOAL OF THE REPOSITORY

1

Bring some stability to the baseline selection process

2

Intended to serve as a custom measure reference, similar to TRM but strictly for measure baselines

3

Compile existing resources into a repository to be leveraged by evaluators and implementers for decisions about baselines

4

Enable users to manage baseline risk from project development all the way to evaluation

DEVELOPMENT PROCESS



CREATE

Generate measure list

- Mass Save baseline doc
- Measures with completed research
- Evaluation measures

RESEARCH

Perform secondary research

- E-Source
- Pacific Northwest RTF
- CA DEER and work papers

RECOMMEND

Measure baselines & confidence levels

- Reviewed by ISP Working Group

RESULTS

140 measures researched

- Evaluator-vetted list (30)
- In-progress list (110)



VETTED VS. IN-PROGRESS

- Baseline risk mitigation
- Measures characterized into three risk categories
- Low risk measures considered fully “vetted”
- High and medium risk measures considered “in-progress”

EXAMPLE OF A VETTED MEASURE

FIELD

EXAMPLE CONTENTS

VETTED



Measure group

HVAC – equipment type

Measure name

IR Heaters

Baseline relative to code

Not addressed by code

Baseline type

New construction and replace on failure

Evaluation baseline description

Baseline efficiency of 82%

Next revision

7/7/2023

Study date

7/7/2018

Notes

IR ISP research conducted through evaluation efforts in 2018

EXAMPLE IN-PROGRESS MEASURE

FIELD

EXAMPLE CONTENTS

INPROGRESS



Measure group	Wastewater process
Measure name	Wastewater treatment – agitators
Baseline relative to code	Not addressed by code
MassSave MA Baseline	Use aeration to retain suspension of solids in mix-limited designs
ISP Status	Measure recommended for primary ISP
Baseline type	N/A
Evaluation baseline description	Site-specific baseline, additional ISP research needed
Confidence level	Low (High risk)
Next revision	N/A
Study date	N/A
Notes	May be referenced in TR-16. Good candidate for evaluation a/o ISP research if not referenced. Baseline info from NY is available, but dated.

WHEN MIGHT A BASELINE BE OVERTURNED IN AN EX-POST EVALUATION?

It can happen, but it should be a very low probability if the repository is maintained appropriately.

Increased program activity triggers primary research

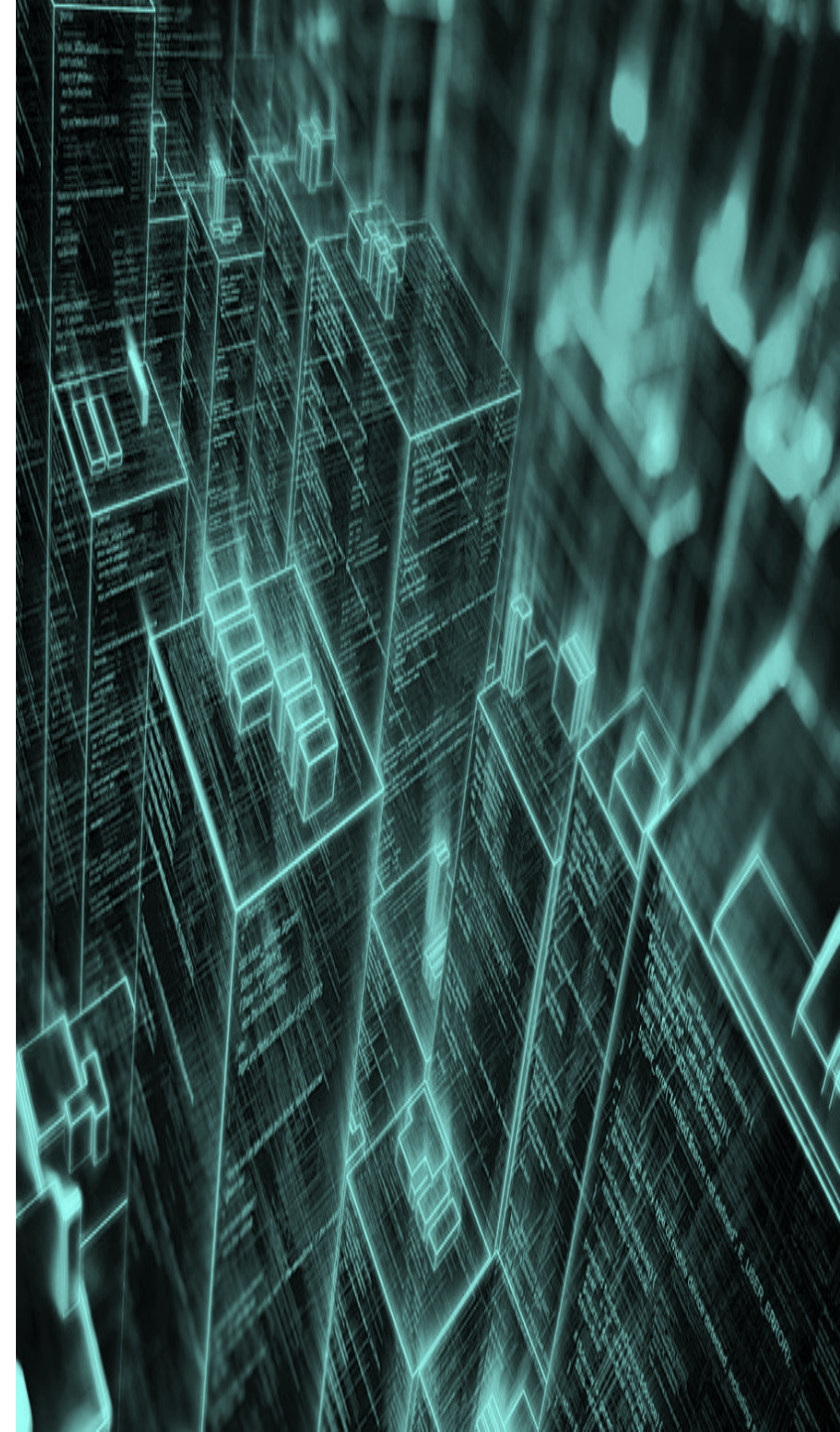
If a small measure becomes a larger contributor to program savings, this may trigger additional research, which may reveal a different baseline.

Market shifts

Widespread technology adoption or availability may cause a technology to be more common, changing ISP.

Something site specific

Site-specific considerations that are not standard to the industry and may cause variation from the standard baseline.





USE OF THIS TOOL

1

A starting point for lost opportunity measures for implementers and evaluators.

2

A reference tool to compare implementation baseline to current repository status.

3

If implementers do not use the baseline, it's recommended to document and rationalize why ISP may not apply.

IMPLEMENTING A REPOSITORY

Following these steps can help improve RR through a reduction in baseline adjustments

1

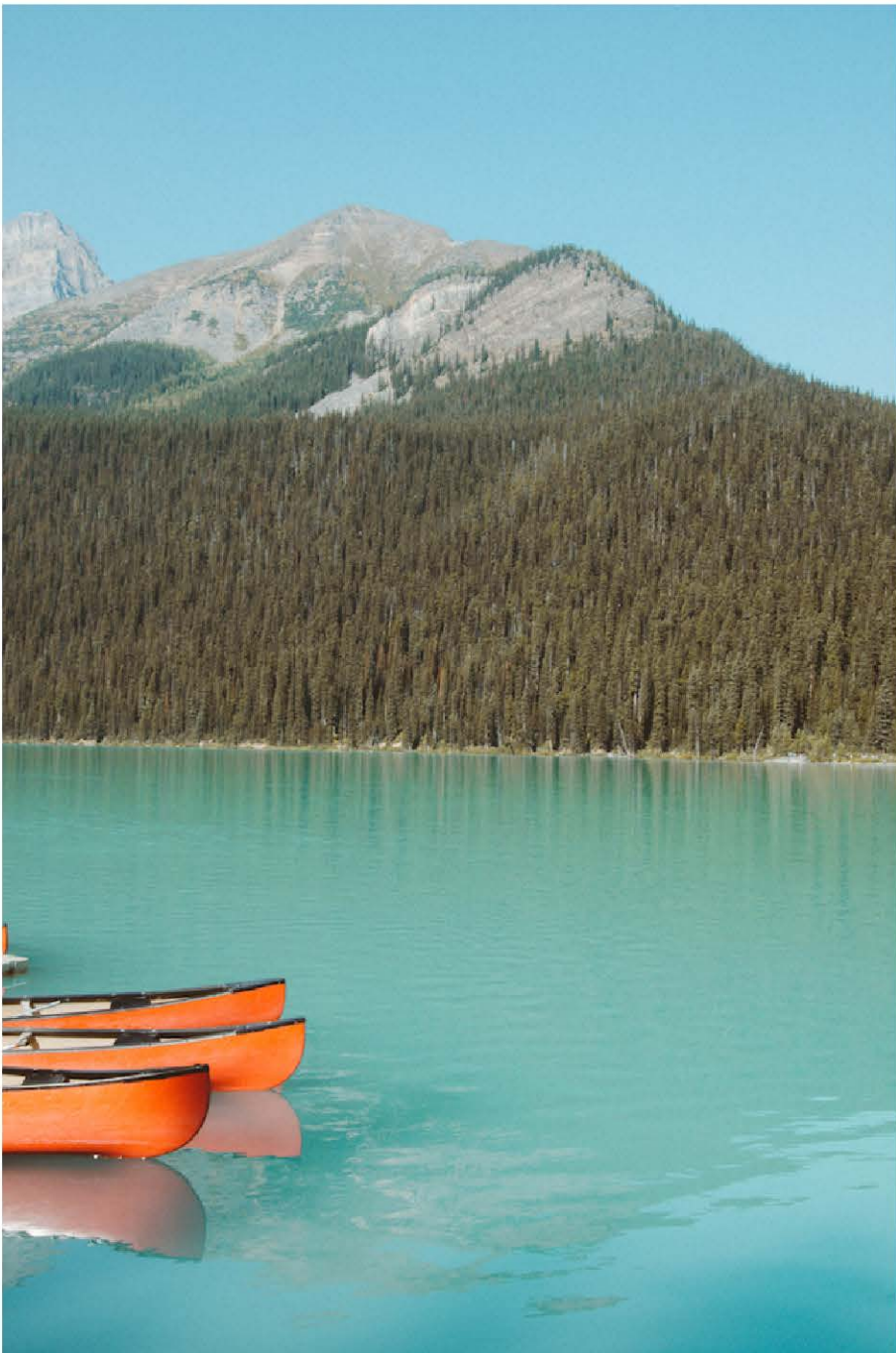
Compile the repository

2

Roll out the tool and educate implementers

3

Maintenance and routine updates



CONTACT ME



Chris Zimbelman



czimbelman@ers-inc.com



978 521-2550 x285



www.ers-inc.com